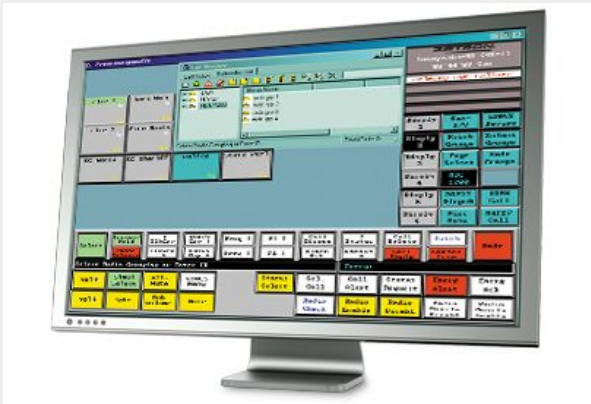


# Integrator RD Workstation

## Integrator RD Workstation



The Integrator RD radio dispatch workstation is an operator position designed for use with a Series 4000, which can be configured with up to sixteen Integrator RD workstations.

A workstation is comprised of Integrator RD radio dispatch software, a host computer, monitor, and the Model 4219 audio panel.

Integrator RD offers additional benefits associated with concurrent execution of other, well-behaved NT applications and the potential for a higher degree of functional integration.

Integrator RD is a member of the Integrator Suite, which includes:

- ✓ Integrator 9-1-1 Emergency Call Taking
- ✓ Integrator ACD Automatic Call Distribution
- ✓ Integrator RS Reporting System
- ✓ Integrator IRR Instant Recall Recorder

## Product Features and Configuration

- ✓ Supports up to 48 channels — any combination of radio, telephone, intercom or public address
- ✓ Up to 16 operating positions — may be mixed with button consoles
- ✓ Supports conventional (mouse driven) or touchscreen operation
- ✓ Supports networked configuration with centralized configuration file management Up to 36 channel resource icons may be presented on one screen
- ✓ Six screen select keys allow instant call-up of previously defined screens
- ✓ Compatible with conventional (tone, DC, E&M) and trunked wireless applications (EDACS, iDEN, MPT1327/MAP27)
- ✓ Integral component of the Integrator Suite

[AT Communication ©](#)

### SPECIFICATIONS

Operating System:	Windows® XP Professional or Windows® Vista
Multi-Tasking:	Operation is warranted only when used with Zetron provided or Zetron authorized software applications
Hardware Platform:	All hardware components must be listed on Microsoft's Windows® Compatible Hardware Products list. PCI slots required
Processor:	350 MHz or faster, Pentium® or equivalent
Data Storage:	2 GB or more fixed disk drive, 3.5" floppy drive, 24x minimum CD-ROM drive
Memory:	256 MB minimum for Windows® XP Pro (512 MB recommended), 3 GB minimum for Windows® Vista
Display:	1024 x 768 pixel (17" to 19") minimum. Dual monitors recommended for simultaneous operation with Integrator 9-1-1. Touch screen supported
Video:	4 MB video memory minimum
Audio:	Sound card with speakers
Pointer:	2 or 3 button PS/2 Mouse, or equivalent
Serial Ports:	One free RS-232 port. Other Integrator applications may require additional ports
Network:	Required for advanced options. TCP/IP Protocol

**Integrator RD - Workstation - Radio Dispatch**